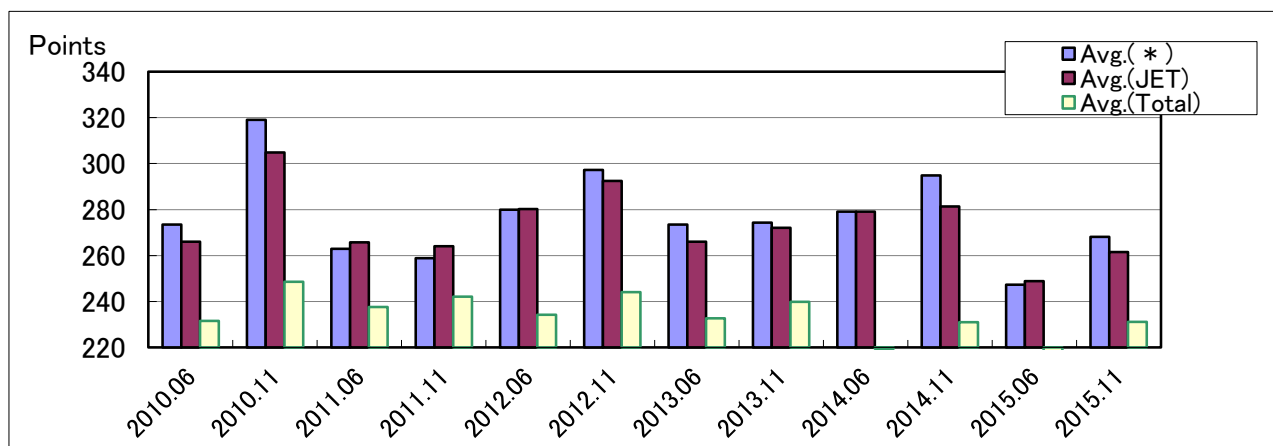


# Results of EJU 2010~

( The Examination for Japanese University Admission for International Students )

J E T 日本語学校 ( JET Academy )

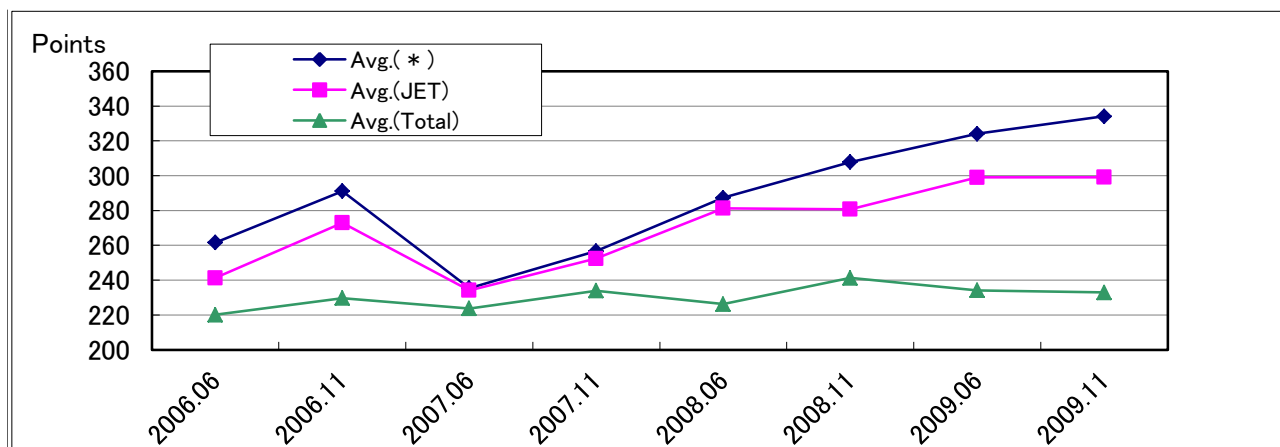


		2014		2015		2016		2017	
		Jun.	Nov.	Jun.	Nov.	Jun.	Nov.	Jun.	Nov.
TOP 10 ( J E T )	1	339	362	360	362				
	2	337	342	355	354				
	3	336	333	350	338				
	4	328	331	337	337				
	5	328	310	332	326				
	6	325	308	310	322				
	7	316	304	306	316				
	8	314	304	296	314				
	9	314	303	294	307				
	10	310	291	293	297				
Avg. ( * )		279.1	294.8	247.3	268.1				
Avg. (JET)		279.1	281.3	248.9	261.5				
Avg. (Total)		219.4	231.0	218.3	231.2				
Highest Score		371	371	373	373				
		2010		2011		2012		2013	
		Jun.	Nov.	Jun.	Nov.	Jun.	Nov.	Jun.	Nov.
TOP 10 ( J E T )	1	357	369	336	352	372	372	349	351
	2	356	365	328	327	359	359	316	349
	3	333	349	327	290	348	350	307	334
	4	333	347	302	251	337	344	292	332
	5	332	345	300	197	313	336	273	325
	6	324	343	252	167	307	336	267	322
	7	322	339	214	---	305	328	266	307
	8	317	339	201	---	304	315	227	301
	9	314	335	132	---	285	311	223	300
	10	295	333	---	---	246	297	215	293
Avg. ( * )		273.4	319.1	262.9	258.8	279.9	297.3	273.4	274.3
Avg. (JET)		266.0	304.9	265.8	264.0	280.2	292.5	266.0	272.0
Avg. (Total)		231.5	248.6	237.6	242.1	234.2	244.1	232.7	239.9
Highest Score		369	369	368	368	372	372	370	370

# Results of EJU 2006-2009

( The Examination for Japanese University Admission for International Students )

J E T 日本語学校 ( JET Academy )



		2006		2007		2008		2009	
		Jun.	Nov.	Jun.	Nov.	Jun.	Nov.	Jun.	Nov.
T O P  10 ( J E T )	1	345	370	362	381	382	378	392	393
	2	326	368	345	373	372	376	391	386
	3	323	367	328	361	371	368	390	378
	4	303	362	321	358	356	365	384	368
	5	303	351	315	352	348	364	367	365
	6	302	345	311	351	334	357	354	362
	7	298	344	310	350	334	341	346	360
	8	298	339	310	348	333	334	345	352
	9	280	335	309	348	332	333	343	343
	10	275	325	296	346	328	328	332	341
Avg. ( * )		261.6	291.1	235.4	256.7	287.3	307.8	324.1	334.1
Avg. (JET)		241.3	272.9	234.1	252.4	281.3	280.7	299.0	299.1
Avg. (Total)		220.1	229.7	223.7	233.9	226.2	241.3	234.1	232.9

## \* Average of College Preparation Class's Students in JET

What is EJU ? — The Examination for Japanese University Admission for International Students (EJU) is used to evaluate whether international students who wish to study at the undergraduate level at universities or other such higher educational institutions in Japan possess the Japanese language skills and the basic academic abilities needed to study at those institutions. (The EJU score may also be required for graduate school, for example, graduate school of business administration, Meiji University. )

<http://www.jasso.go.jp/eju/>

Due to the difficulties of every EJU tests, it will be appropriate to examined students' ability by the level instead of the scores. Therefore, from year 2011, the statistics is used to adjust the scores.