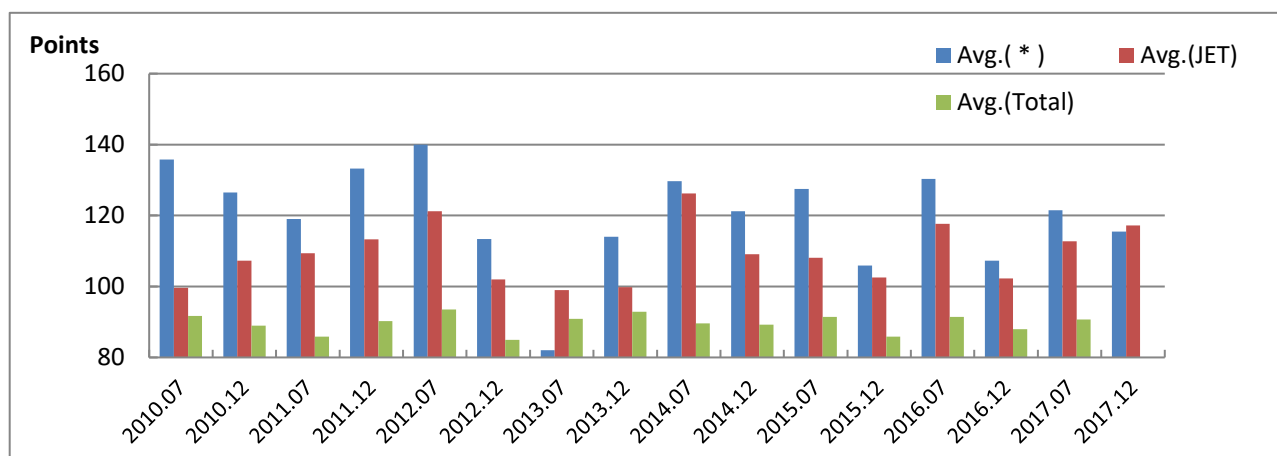


# Results of JLPT - N1 2010~

( Japanese-Language Proficiency Test )

J E T 日本語学校 ( JET Academy )



		2014		2015		2016		2017	
		Jul.	Dec.	Jul.	Dec.	Jul.	Dec.	Jul.	Dec.
T O P 5	1	179	180	164	163	159	145	176	
	2	148	151	134	161	138	145	141	
	3	148	147	133	154	132	141	138	
	4	146	145	133	145	128	137	125	
	5	138	145	127	131	105	137	123	
Avg. ( * )		129.7	121.2	127.5	105.9	130.3	107.3	121.5	
Avg. (JET)		126.2	109.1	108.1	102.5	117.7	102.3	112.7	
Avg. (Total)		89.6	89.2	91.4	85.9	91.4	88.0	90.7	

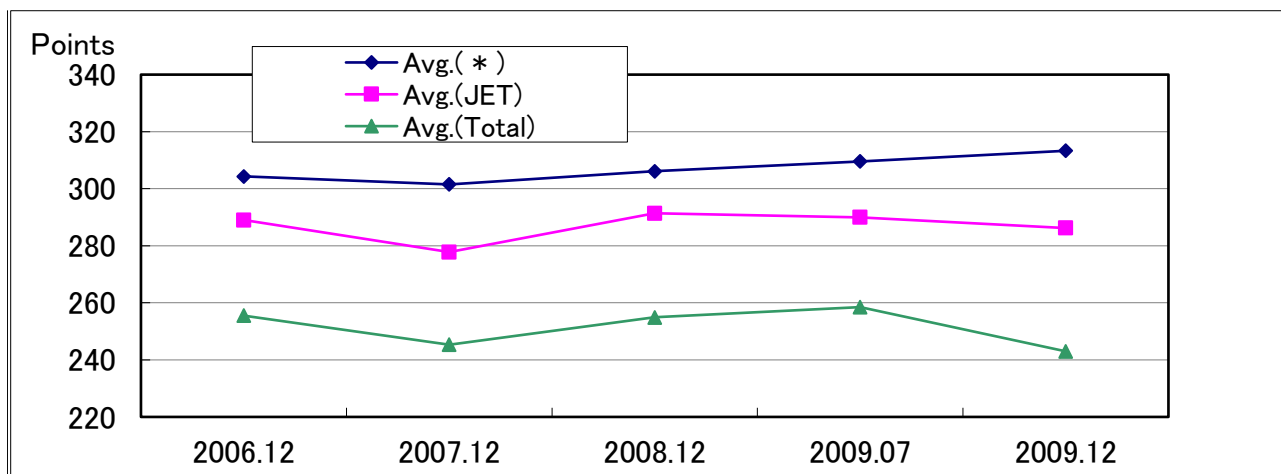
		2010		2011		2012		2013	
		Jul.	Dec.	Jul.	Dec.	Jul.	Dec.	Jul.	Dec.
T O P 5	1	180	180	139	180	175	160	130	180
	2	167	180	137	163	157	157	121	148
	3	129	177	134	156	156	155	103	139
	4	113	168	133	143	153	147	97	133
	5	110	158	111	142	136	143	82	116
Avg. ( * )		135.8	126.5	119.0	133.2	140.0	113.4	82.0	114
Avg. (JET)		99.6	107.3	109.4	113.3	121.2	102.0	99.0	99.8
Avg. (Total)		91.7	89.0	85.9	90.2	93.5	85.0	90.9	92.9

\* Average of College Preparation Class's Students in JET

# Results of JLPT - Level 1 2006-2009

( Japanese-Language Proficiency Test )

J E T 日本語学校 ( JET Academy )



		2006	2007	2008	2009	
		12月	12月	12月	7月	12月
T O P  10  ( J E T )	1	371	374	364	344	376
	2	361	365	352	342	372
	3	360	351	350	339	360
	4	355	350	349	330	358
	5	355	347	346	323	354
	6	352	343	345	314	348
	7	350	343	343	312	340
	8	345	342	343	312	339
	9	344	339	339	311	336
	10	342	336	336	306	327
Avg. ( * )		304.3	301.5	306.1	309.6	313.3
Avg. (JET)		289.0	277.8	291.4	290.0	286.2
Avg. (Total)		255.5	245.3	254.9	258.5	243.0

\* Average of College Preparation Class's Students in JET

What is JLPT ?

— Founded by *the Japan Foundation* and *Japan Educational Exchanges and Services*. The purpose of the test is to evaluate and to certify the Japanese proficiency of non-native speakers. For vocational school, N2 is required. For graduated schools and employments, N1 is required.

<http://www.jlpt.jp/index.html>

From year 2010, regarding to the result of the new system, the name of the level will be changed from level○ to N○. Level 1 refers to N1, level 2 refers to N2, and level 3 is same as N4. Due to the reform of the new system, it seems easier to pass the exam. P.S. the total score of the old system was 400; the new is 180.